

GE-UK (-2RS) SERIES METRIC PLAIN SPHERICAL BEARINGS WITH PTFE LINER (MAINTENANCE FREE)

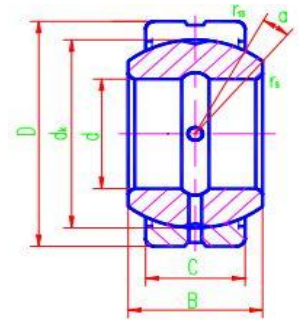


GE-UK Series: Outer ring of Carbon Chromium Steel, fracture split, hardened and phosphated, with PTFE Composite Lining and inner ring of Carbon Chromium Steel with the sliding surface treated with hard chromium plating.

GE-C Series Outer Ring: As per the UK series but the outer ring is without a Phosphated finish.

GE-UK Series also available on many sizes with Polyetherane Seals (See table) - Add suffix -2RS

Temperature Range: Open design -50°C to +150°C / 2RS design -50°C to +130°C



Part Number	Dimensions								Load Ratings (kN)		Weight (kg)
	d	D	B	C	dk	rs	ris	a°	Dynamic	Static	
GE6UK / GE6C	6	14	6	4	10	0.3	0.3	13	3.6	9.1	0.004
GE8UK / GE8C	8	16	8	5	13	0.3	0.3	15	5.8	14	0.007
GE10UK / GE10C	10	19	9	6	16	0.3	0.3	12	8.6	21	0.011
GE12UK / GE12C	12	22	10	7	18	0.3	0.3	10	1	28	0.017
GE15UK / GE15C	15	26	12	9	22	0.3	0.3	8	18	45	0.026
GE17UK / GE17UK-2RS	17	30	14	10	25	0.3	0.3	10	22	56	0.040
GE20UK / GE20UK-2RS	20	35	16	12	29	0.3	0.3	9	45	104	0.064
GE25UK / GE25UK-2RS	25	42	20	16	35.5	0.6	0.6	7	85	204	0.119
GE30UK / GE30UK-2RS	30	47	22	18	40.7	0.6	0.6	6	110	263	0.153
GE35UK / GE35UK-2RS	35	55	25	20	47	0.6	1	6	140	338	0.233
GE40UK / GE40UK-2RS	40	62	28	22	53	0.6	1	7	175	419	0.306
GE45UK / GE45UK-2RS	45	68	32	25	60	0.6	1	7	225	540	0.427
GE50UK / GE50UK-2RS	50	75	35	28	66	0.6	1	6	275	665	0.546
GE55UK / GE55UK-2RS	55	85	40	32	74	0.6	1	7	355	852	0.939
GE60UK / GE60UK-2RS	60	90	44	36	80	1	1	6	430	1030	1.040
GE70UK / GE70UK-2RS	70	105	49	40	92	1	1	6	550	1320	1.550
GE80UK / GE80UK-2RS	80	120	55	45	105	1	1	6	705	1700	2.310
GE90UK / GE90UK-2RS	90	130	60	50	115	1	1	5	860	2070	2.750
GE100UK / GE100UK-2RS	100	150	70	55	130	1	1	7	1070	2570	4.450
GE110UK / GE110UK-2RS	110	160	70	55	140	1	1	6	1150	2770	4.820
GE120UK-2RS	120	180	85	70	160	1	1	6	1680	4030	8.050
GE140UK-2RS	140	210	90	70	180	1	1	7	1890	4530	11.200
GE160UK-2RS	160	230	105	80	200	1	1	8	2400	5760	14.100
GE180UK-2RS	180	260	105	80	225	1.1	1.1	6	2700	6480	18.500
GE200UK-2RS	200	290	130	100	250	1.1	1.1	7	3750	9000	28.400
GE220UK-2RS	220	320	135	100	275	1.1	1.1	8	4120	9900	35.700
GE240UK-2RS	240	340	140	100	300	1.1	1.1	8	4500	10800	39.700
GE260UK-2RS	260	370	150	110	325	1.1	1.1	7	5360	12870	77.600